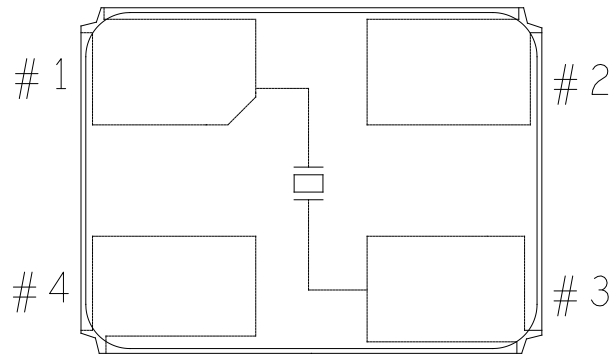


REVISIONS			
REV	DESCRIPTION	DATE	APPROVED
A	INITIAL RELEASE	27SEP21	D. HARRINGTON
B	AS PER ECR-107848	23MAR22	D. HARRINGTON
C	AS PER ECR-108219	27APR22	D. HARRINGTON

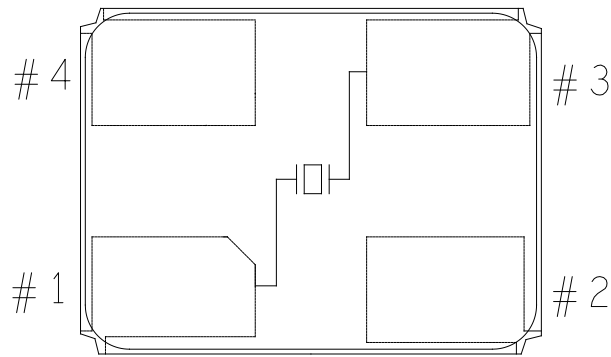
Note: Actual device pin #1 has a chamfered corner terminal as shown.



(Y2)YSML126W98H31-ASSY-DETAIL

SCALE:NONE

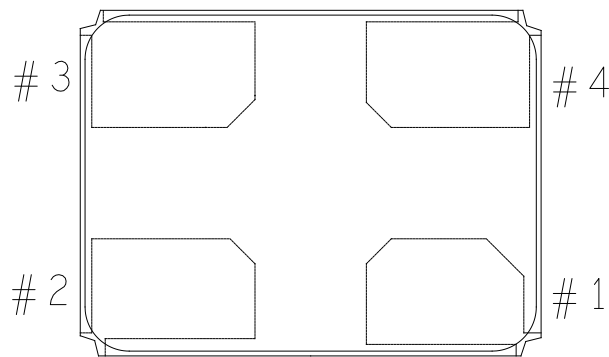
Note: Actual device pin #4 has a chamfered corner terminal as shown.



(Y3)YSML126W98H31-ASSY-DETAIL

SCALE:NONE

Note: Actual device pin #1 has a chamfered corner terminal as shown.




(Y4)YSML126W98H31-ASSY-DETAIL

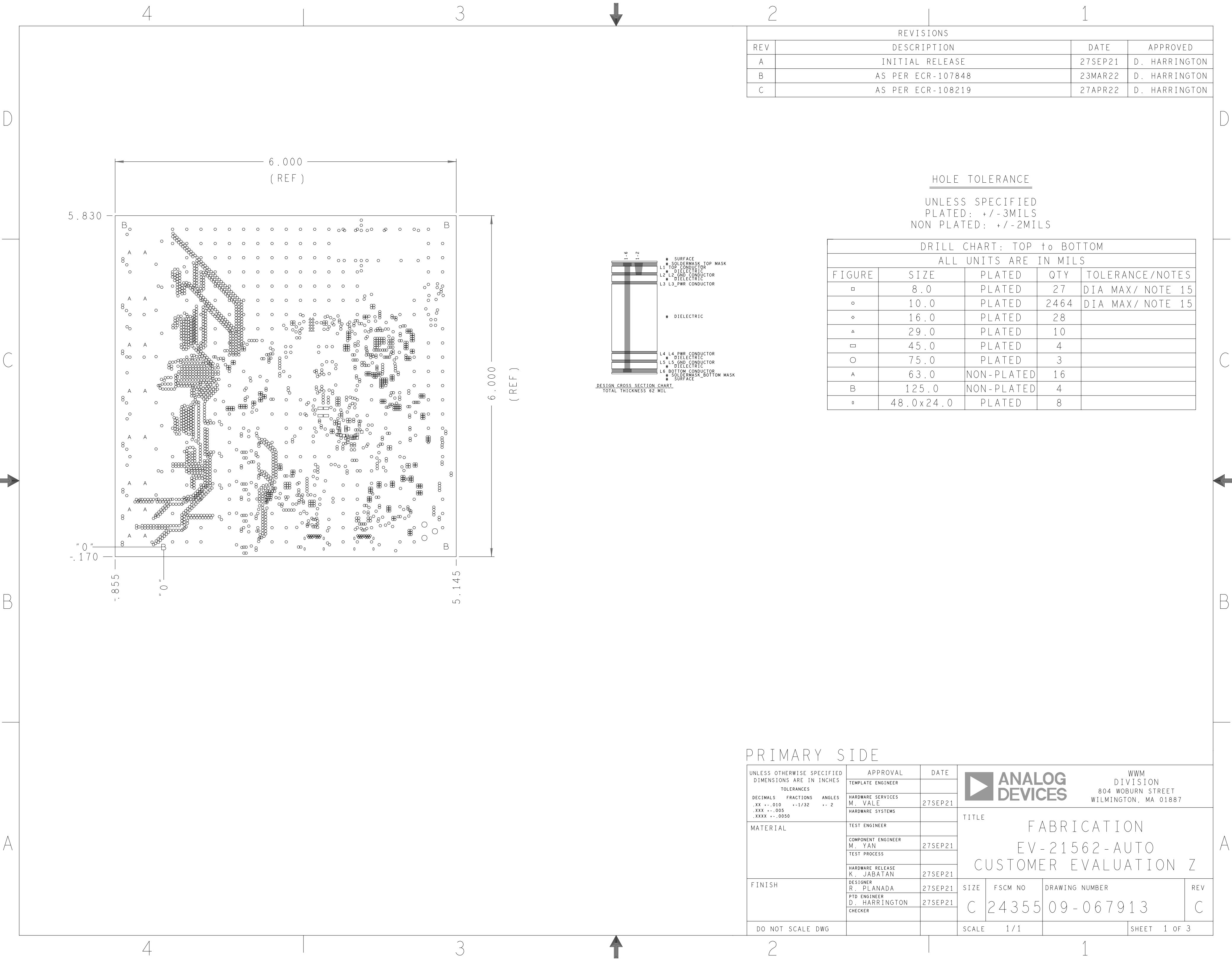
SCALE:NONE

ASSEMBLY NOTES:

- BOARD ACCEPTABILITY PER ANALOG DEVICES, INC. SPECIFICATION TST00119 (LATEST REVISION).
- REPAIRS PER IPC-7711/21(LATEST REVISION) ARE ALLOWED.
- REPAIRS ARE NOT ALLOWED IN SOLDERMASK FREE AREAS ON EITHER SIDE OF THE BOARD.
- SCREWS(M025339)MPN: NY PMS 440 0025 PH TO BE INSTALLED ON THE PRIMARY SIDE AND STANDOFFS(M025474) MPN: 1902C TO BE INSTALLED ON SECONDARY SIDE AT 4 PLACES
- RoHS COMPLIANCE: ASSEMBLY VENDOR SHOULD ASSURE COMPLIANCE WITH LEAD-FREE AND RoHS PCB ASSEMBLY STANDARDS (EU RoHS DIRECTIVE 2002/95/EC).

PRIMARY SIDE

UNLESS OTHERWISE SPECIFIED DIMENSIONS ARE IN INCHES TOLERANCES DECIMALS FRACTIONS ANGLES .XX -.010 --1/32 -- 2 .XXX -.005 .XXXX -.0050	APPROVAL	DATE	<div>ANALOG DEVICES</div> <div>WWM DIVISION 804 WOBURN STREET WILMINGTON, MA 01887</div>				
	TEMPLATE ENGINEER						
	HARDWARE SERVICES M. VALE	27SEP21	TITLE ASSEMBLY EV-21562-AUTO CUSTOMER EVALUATION Z				
	HARDWARE SYSTEMS						
MATERIAL	TEST ENGINEER						
	COMPONENT ENGINEER M. YAN	27SEP21					
	TEST PROCESS						
FINISH	HARDWARE RELEASE K. JABATAN	27SEP21	SIZE	FSCM NO	DRAWING NUMBER	REV	
	DESIGNER R. PLANADA	27SEP21					
	PTD ENGINEER D. HARRINGTON	27SEP21	C	24355	01-067913	C	
	CHECKER						
DO NOT SCALE DWG			SCALE	1 / 1		SHEET	1 OF 2



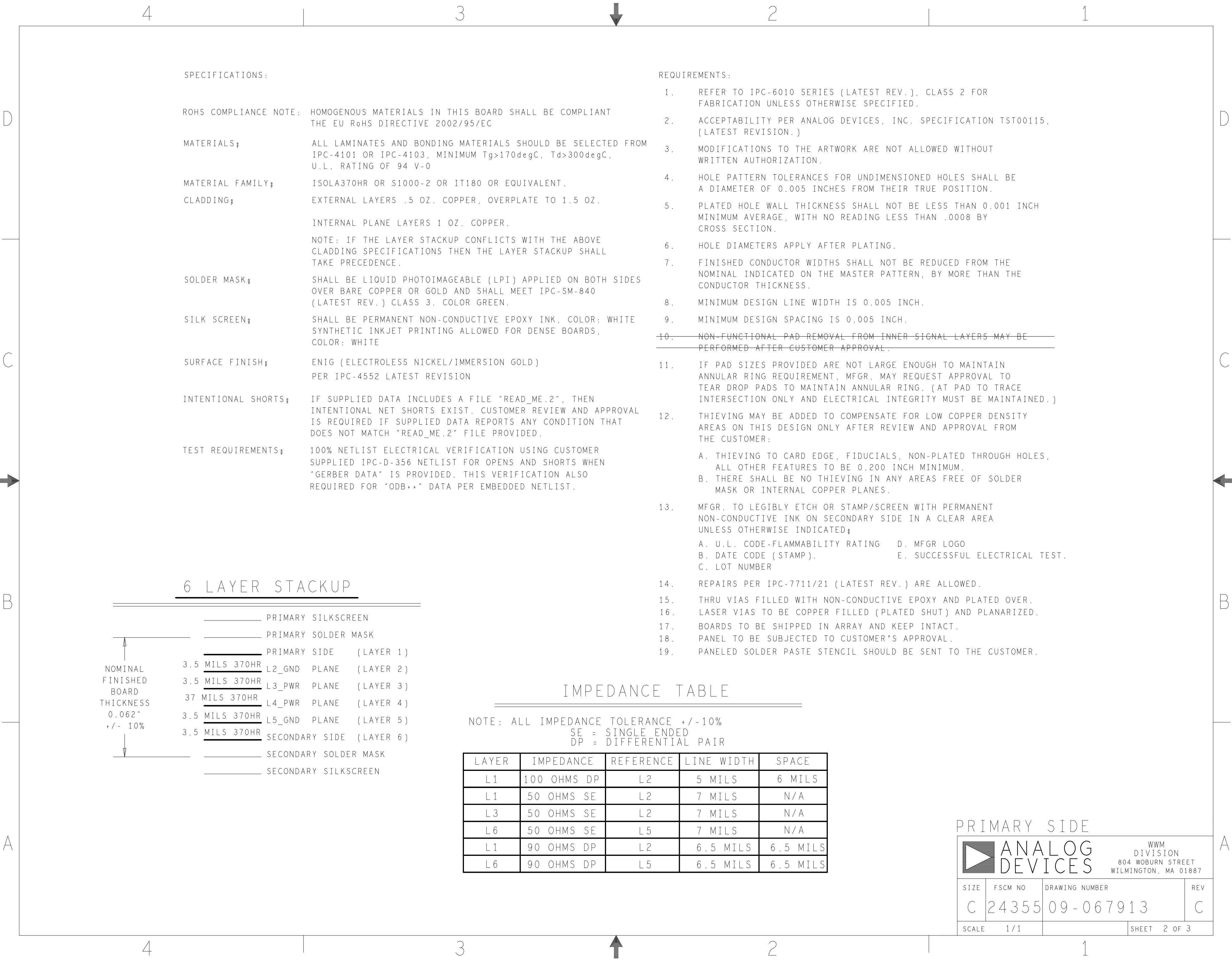
REVISIONS			
REV	DESCRIPTION	DATE	APPROVED
A	INITIAL RELEASE	27SEP21	D. HARRINGTON
B	AS PER ECR-107848	23MAR22	D. HARRINGTON
C	AS PER ECR-108219	27APR22	D. HARRINGTON

HOLE TOLERANCE
UNLESS SPECIFIED
PLATED: +/-3MILS
NON PLATED: +/-2MILS

DRILL CHART: TOP to BOTTOM				
ALL UNITS ARE IN MILS				
FIGURE	SIZE	PLATED	QTY	TOLERANCE/NOTES
□	8.0	PLATED	27	DIA MAX/ NOTE 15
○	10.0	PLATED	2464	DIA MAX/ NOTE 15
◇	16.0	PLATED	28	
△	29.0	PLATED	10	
▢	45.0	PLATED	4	
○	75.0	PLATED	3	
A	63.0	NON-PLATED	16	
B	125.0	NON-PLATED	4	
°	48.0x24.0	PLATED	8	

PRIMARY SIDE

UNLESS OTHERWISE SPECIFIED DIMENSIONS ARE IN INCHES	APPROVAL	DATE	<div><div></div><div>ANALOG DEVICES</div></div> <div>WWM DIVISION 804 WOBURN STREET WILMINGTON, MA 01887</div>								
	TEMPLATE ENGINEER										
	TOLERANCES			TITLE FABRICATION EV-21562-AUTO CUSTOMER EVALUATION Z							
DECIMALS FRACTIONS ANGLES	HARDWARE SERVICES M. VALE	27SEP21									
.XX -.010 --1/32 -- 2 .XXX -.005 .XXXX -.0050	HARDWARE SYSTEMS										
MATERIAL	TEST ENGINEER		SIZE C								
	COMPONENT ENGINEER M. YAN	27SEP21					FSCM NO 24355		DRAWING NUMBER 09-067913		REV C
	TEST PROCESS										
	HARDWARE RELEASE K. JABATAN	27SEP21									
FINISH	DESIGNER R. PLANADA	27SEP21	SCALE 1/1								
	PTD ENGINEER D. HARRINGTON	27SEP21					SHEET 1 OF 3				
	CHECKER										
DO NOT SCALE DWG											



SPECIFICATIONS:

ROHS COMPLIANCE NOTE: HOMOGENOUS MATERIALS IN THIS BOARD SHALL BE COMPLIANT THE EU RoHS DIRECTIVE 2002/95/EC

MATERIALS: ALL LAMINATES AND BONDING MATERIALS SHOULD BE SELECTED FROM IPC-4101 OR IPC-4103, MINIMUM Tg>170degC, Td>300degC, U.L. RATING OF 94 V-0

MATERIAL FAMILY: ISOLA370HR OR S1000-2 OR IT180 OR EQUIVALENT.

CLADDING: EXTERNAL LAYERS .5 OZ. COPPER, OVERPLATE TO 1.5 OZ.

INTERNAL PLANE LAYERS 1 OZ. COPPER.

NOTE: IF THE LAYER STACKUP CONFLICTS WITH THE ABOVE CLADDING SPECIFICATIONS THEN THE LAYER STACKUP SHALL TAKE PRECEDENCE.

SOLDER MASK: SHALL BE LIQUID PHOTOIMAGEABLE (LPI) APPLIED ON BOTH SIDES OVER BARE COPPER OR GOLD AND SHALL MEET IPC-SM-840 (LATEST REV.) CLASS 3. COLOR GREEN.

SILK SCREEN: SHALL BE PERMANENT NON-CONDUCTIVE EPOXY INK, COLOR: WHITE SYNTHETIC INKJET PRINTING ALLOWED FOR DENSE BOARDS, COLOR: WHITE

SURFACE FINISH: ENIG (ELECTROLESS NICKEL/IMMERSION GOLD) PER IPC-4552 LATEST REVISION

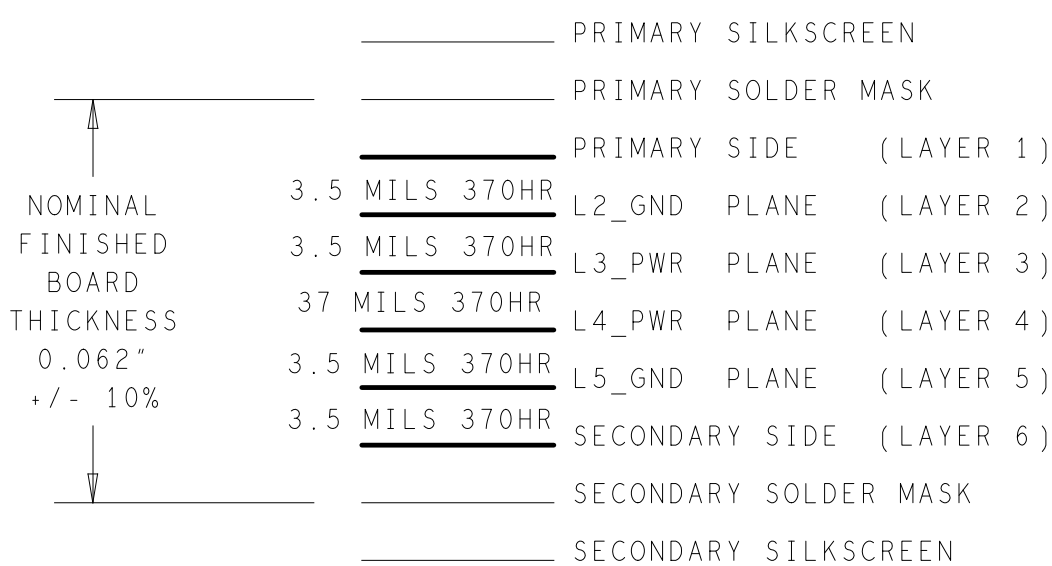
INTENTIONAL SHORTS: IF SUPPLIED DATA INCLUDES A FILE "READ_ME.2", THEN INTENTIONAL NET SHORTS EXIST. CUSTOMER REVIEW AND APPROVAL IS REQUIRED IF SUPPLIED DATA REPORTS ANY CONDITION THAT DOES NOT MATCH "READ_ME.2" FILE PROVIDED.

TEST REQUIREMENTS: 100% NETLIST ELECTRICAL VERIFICATION USING CUSTOMER SUPPLIED IPC-D-356 NETLIST FOR OPENS AND SHORTS WHEN "GERBER DATA" IS PROVIDED. THIS VERIFICATION ALSO REQUIRED FOR "ODB++" DATA PER EMBEDDED NETLIST.

REQUIREMENTS:

- REFER TO IPC-6010 SERIES (LATEST REV.), CLASS 2 FOR FABRICATION UNLESS OTHERWISE SPECIFIED.
- ACCEPTABILITY PER ANALOG DEVICES, INC. SPECIFICATION TST00115, (LATEST REVISION.)
- MODIFICATIONS TO THE ARTWORK ARE NOT ALLOWED WITHOUT WRITTEN AUTHORIZATION.
- HOLE PATTERN TOLERANCES FOR UNDIMENSIONED HOLES SHALL BE A DIAMETER OF 0.005 INCHES FROM THEIR TRUE POSITION.
- PLATED HOLE WALL THICKNESS SHALL NOT BE LESS THAN 0.001 INCH MINIMUM AVERAGE, WITH NO READING LESS THAN .0008 BY CROSS SECTION.
- HOLE DIAMETERS APPLY AFTER PLATING.
- FINISHED CONDUCTOR WIDTHS SHALL NOT BE REDUCED FROM THE NOMINAL INDICATED ON THE MASTER PATTERN, BY MORE THAN THE CONDUCTOR THICKNESS.
- MINIMUM DESIGN LINE WIDTH IS 0.005 INCH.
- MINIMUM DESIGN SPACING IS 0.005 INCH.
- ~~NON-FUNCTIONAL PAD REMOVAL FROM INNER SIGNAL LAYERS MAY BE PERFORMED AFTER CUSTOMER APPROVAL.~~
- IF PAD SIZES PROVIDED ARE NOT LARGE ENOUGH TO MAINTAIN ANNULAR RING REQUIREMENT, MFR. MAY REQUEST APPROVAL TO TEAR DROP PADS TO MAINTAIN ANNULAR RING. (AT PAD TO TRACE INTERSECTION ONLY AND ELECTRICAL INTEGRITY MUST BE MAINTAINED.)
- THIEVING MAY BE ADDED TO COMPENSATE FOR LOW COPPER DENSITY AREAS ON THIS DESIGN ONLY AFTER REVIEW AND APPROVAL FROM THE CUSTOMER:
 - THIEVING TO CARD EDGE, FIDUCIALS, NON-PLATED THROUGH HOLES, ALL OTHER FEATURES TO BE 0.200 INCH MINIMUM.
 - THERE SHALL BE NO THIEVING IN ANY AREAS FREE OF SOLDER MASK OR INTERNAL COPPER PLANES.
- MFR. TO LEGIBLY ETCH OR STAMP/SCREEN WITH PERMANENT NON-CONDUCTIVE INK ON SECONDARY SIDE IN A CLEAR AREA UNLESS OTHERWISE INDICATED:
 - U.L. CODE-FLAMMABILITY RATING
 - DATE CODE (STAMP).
 - LOT NUMBER
 - MFR LOGO
 - SUCCESSFUL ELECTRICAL TEST.
- REPAIRS PER IPC-7711/21 (LATEST REV.) ARE ALLOWED.
- THRU VIAS FILLED WITH NON-CONDUCTIVE EPOXY AND PLATED OVER.
- LASER VIAS TO BE COPPER FILLED (PLATED SHUT) AND PLANARIZED.
- BOARDS TO BE SHIPPED IN ARRAY AND KEEP INTACT.
- PANEL TO BE SUBJECTED TO CUSTOMER'S APPROVAL.
- PANELED SOLDER PASTE STENCIL SHOULD BE SENT TO THE CUSTOMER.

6 LAYER STACKUP




IMPEDANCE TABLE

NOTE: ALL IMPEDANCE TOLERANCE +/-10%
SE = SINGLE ENDED
DP = DIFFERENTIAL PAIR

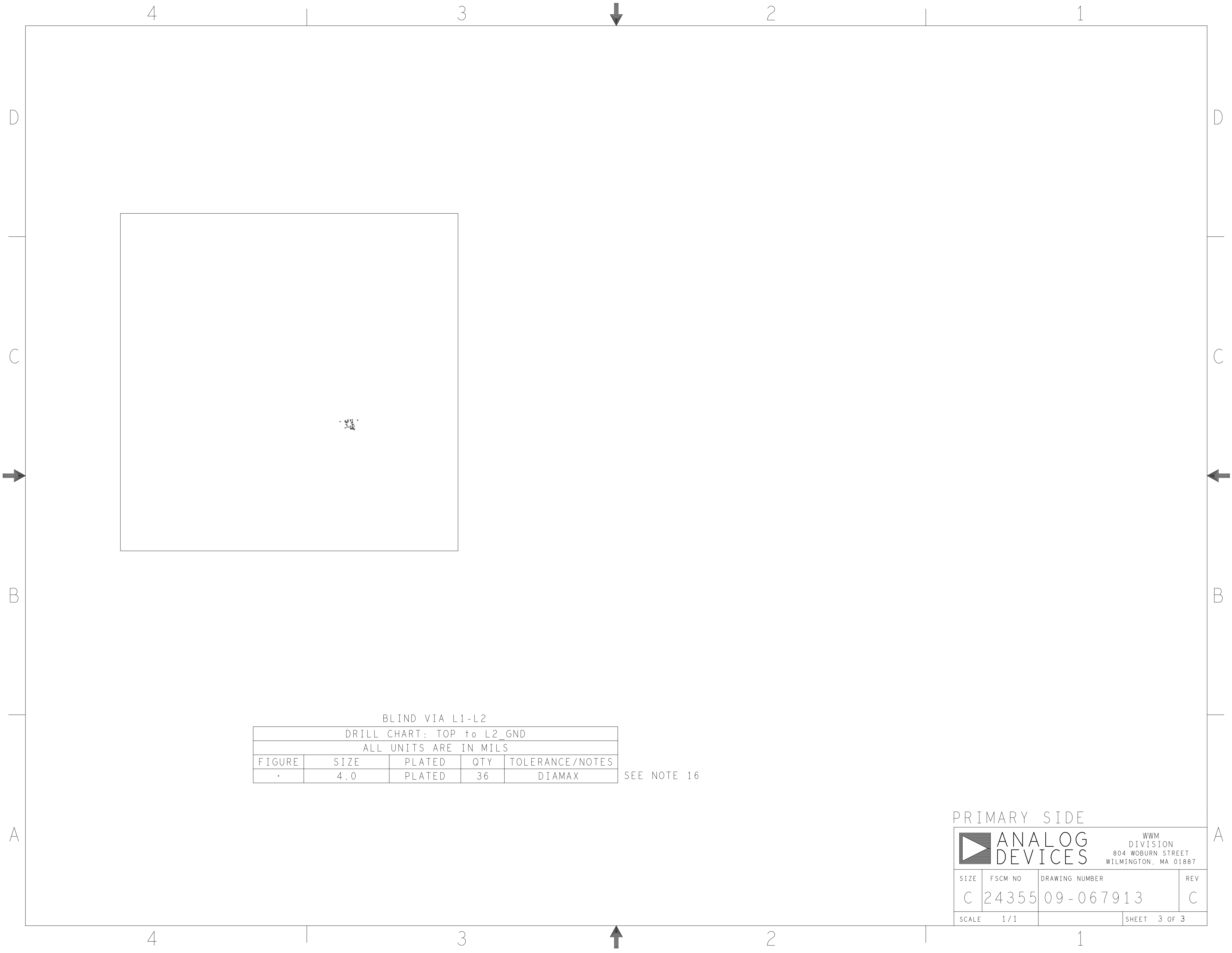
LAYER	IMPEDANCE	REFERENCE	LINE WIDTH	SPACE
L1	100 OHMS DP	L2	5 MILS	6 MILS
L1	50 OHMS SE	L2	7 MILS	N/A
L3	50 OHMS SE	L2	7 MILS	N/A
L6	50 OHMS SE	L5	7 MILS	N/A
L1	90 OHMS DP	L2	6.5 MILS	6.5 MILS
L6	90 OHMS DP	L5	6.5 MILS	6.5 MILS

PRIMARY SIDE

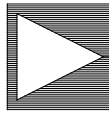


WWM
DIVISION
804 WOBURN STREET
WILMINGTON, MA 01887

SIZE	FSCM NO	DRAWING NUMBER	REV
C	24355	09-067913	C
SCALE	1/1	SHEET 2 OF 3	



PRIMARY SIDE

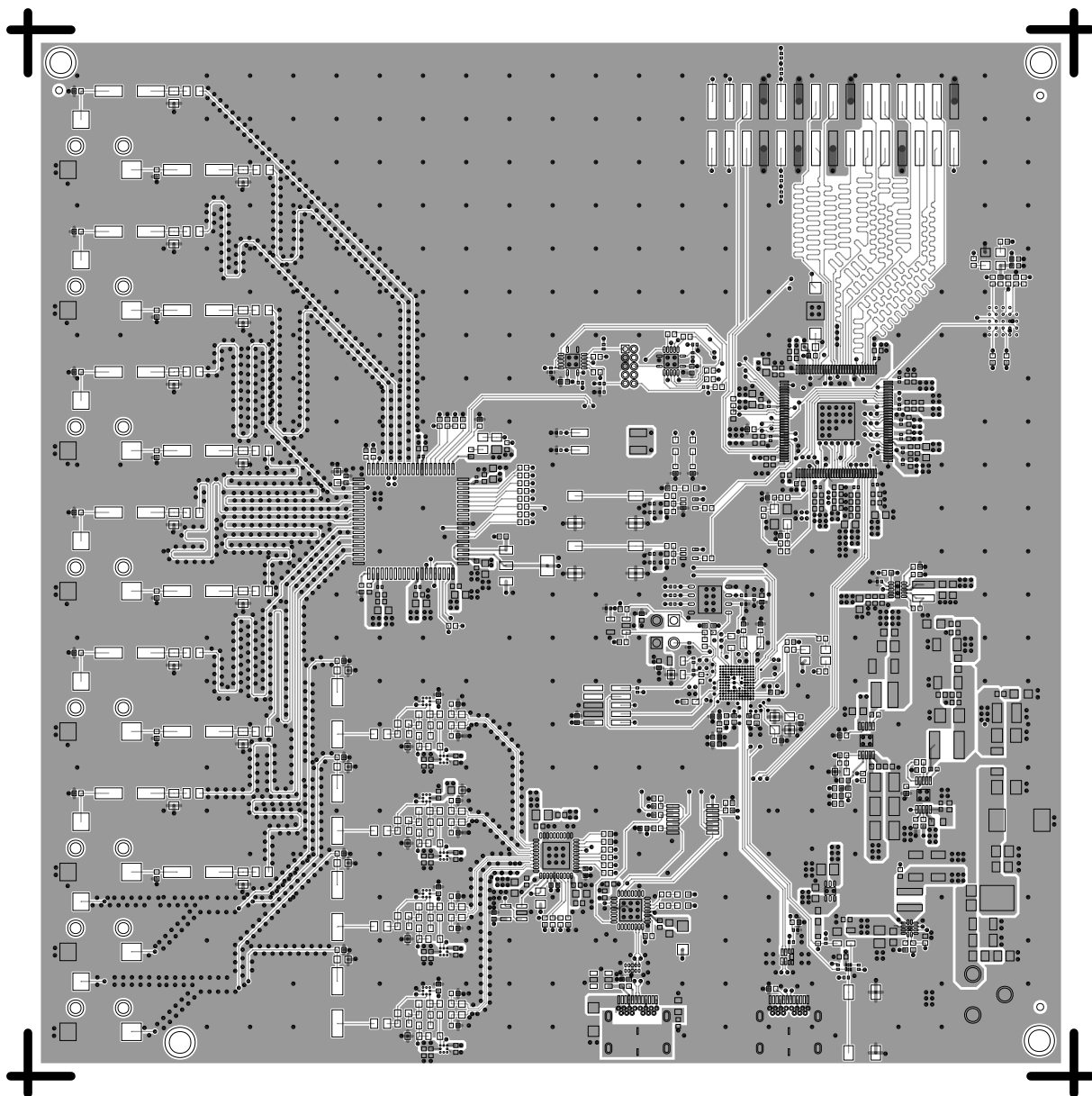


**ANALOG
DEVICES**

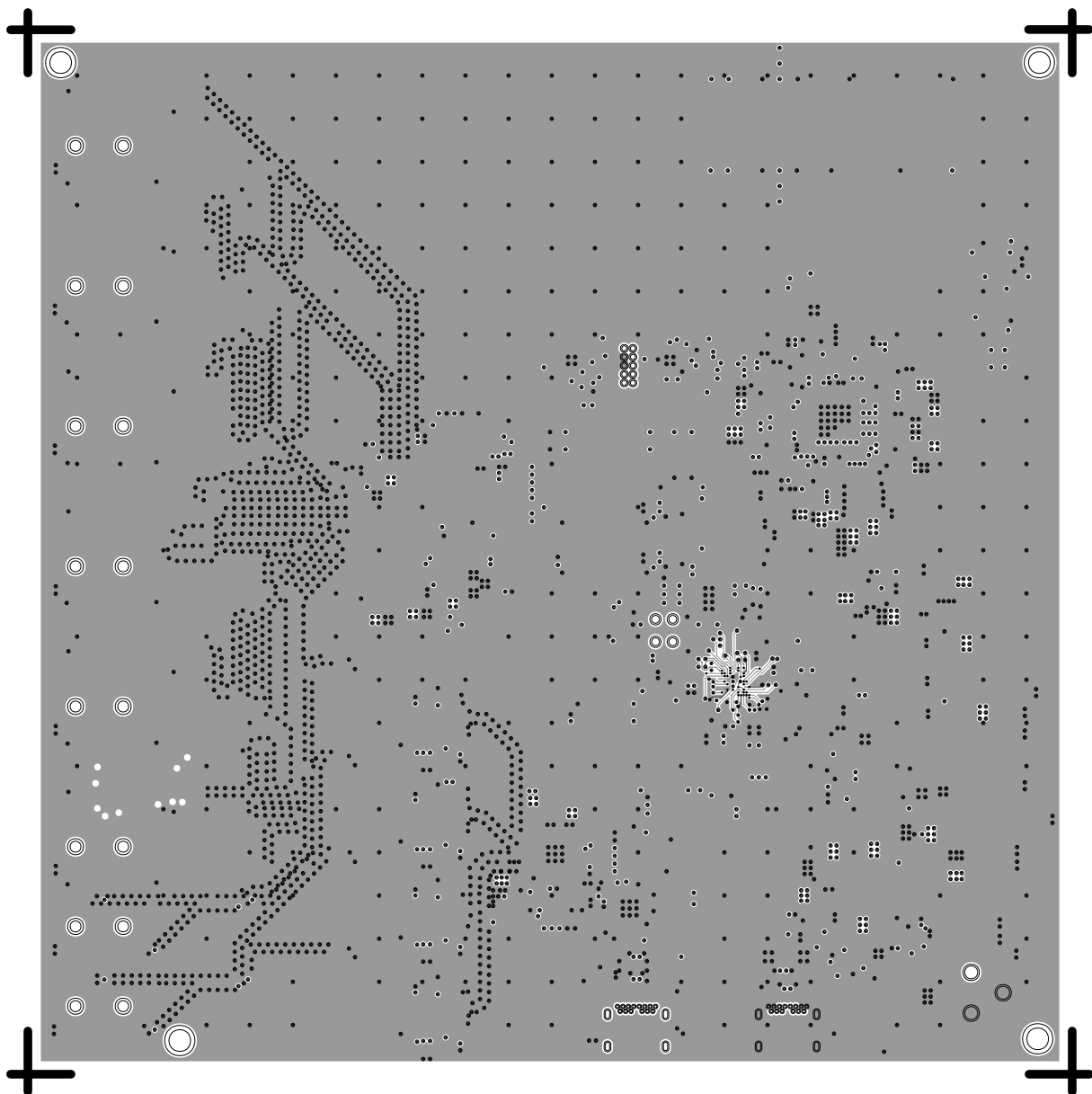
WWM
DIVISION
804 WOBURN STREET
WILMINGTON, MA 01887

SIZE	FSCM NO	DRAWING NUMBER	REV
C	24355	09-067913	C
SCALE	1 / 1	SHEET 3 OF 3	

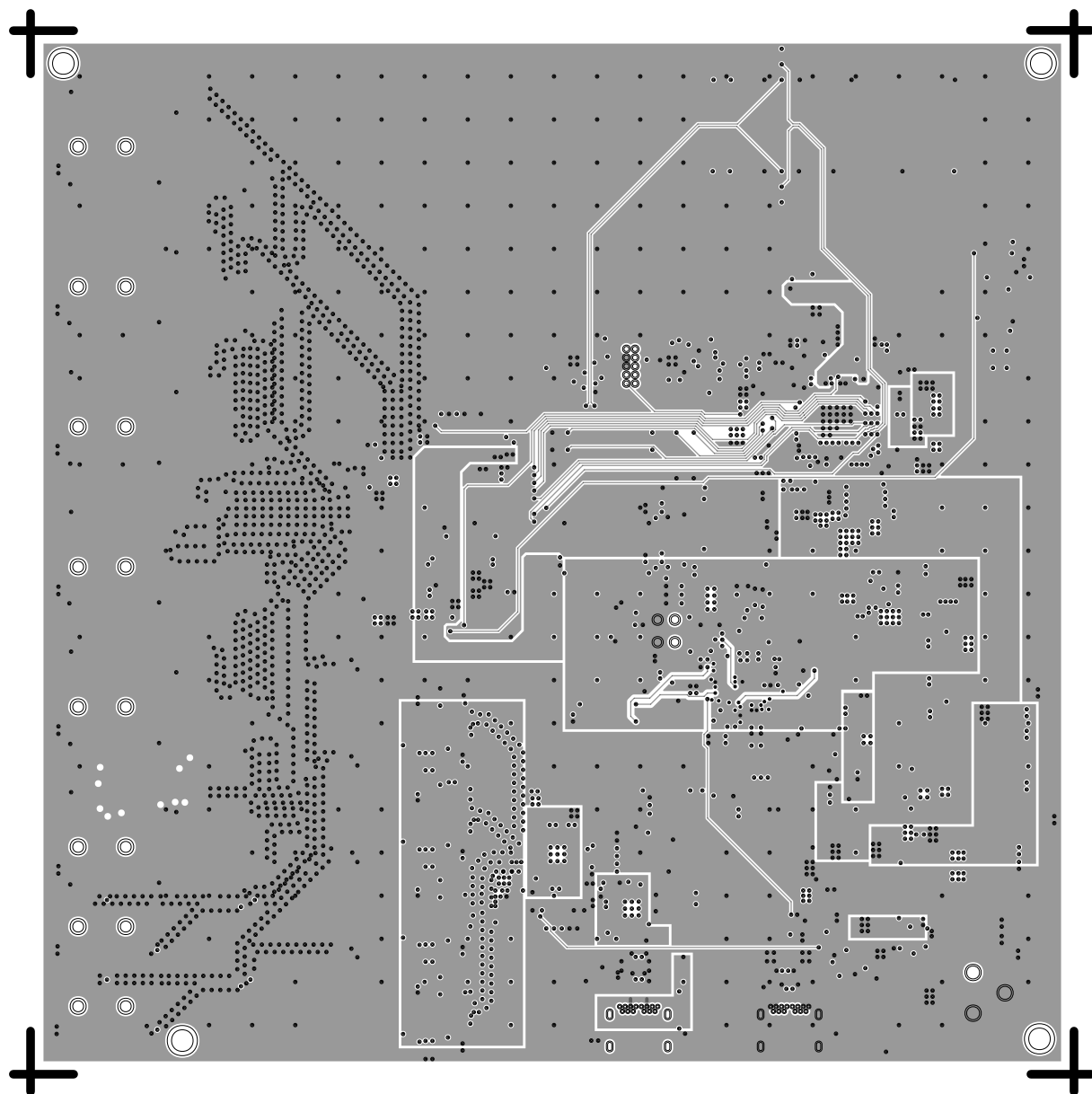
L1 PRIMARY
08-067913-01
REV C



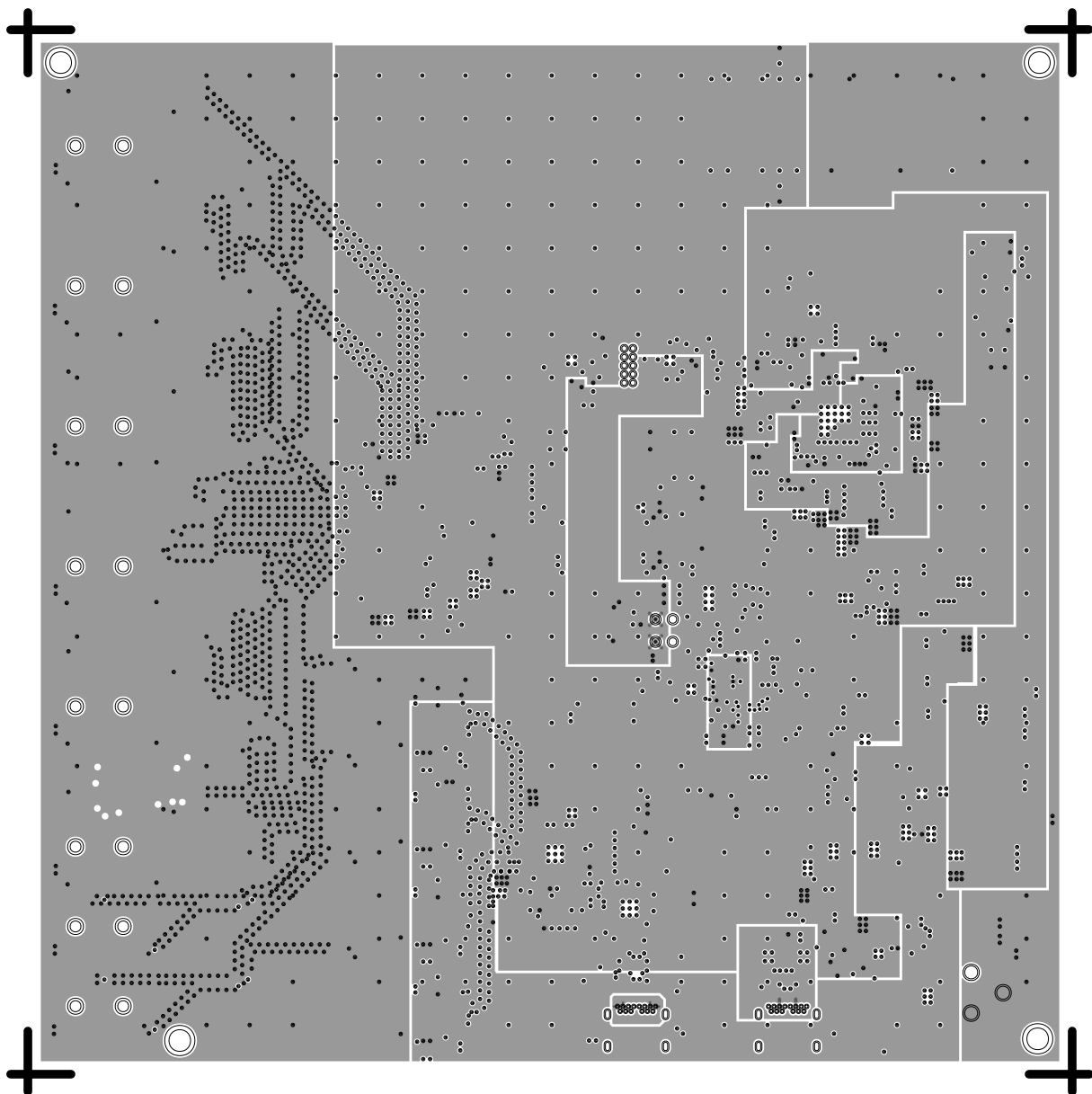
L2 GND
08-067913-07
REV C



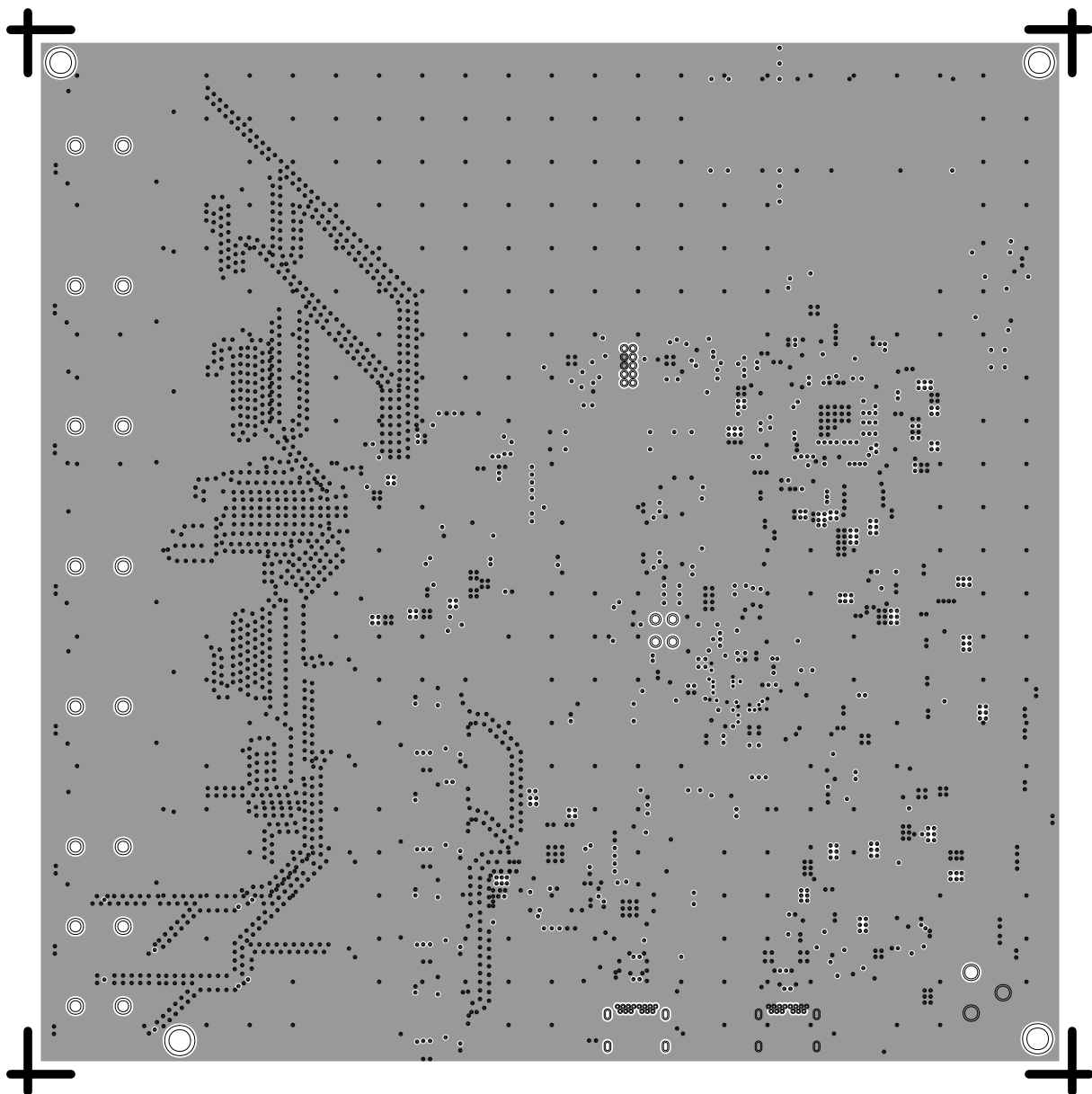
L3 PWR
08-067913-08
REV C



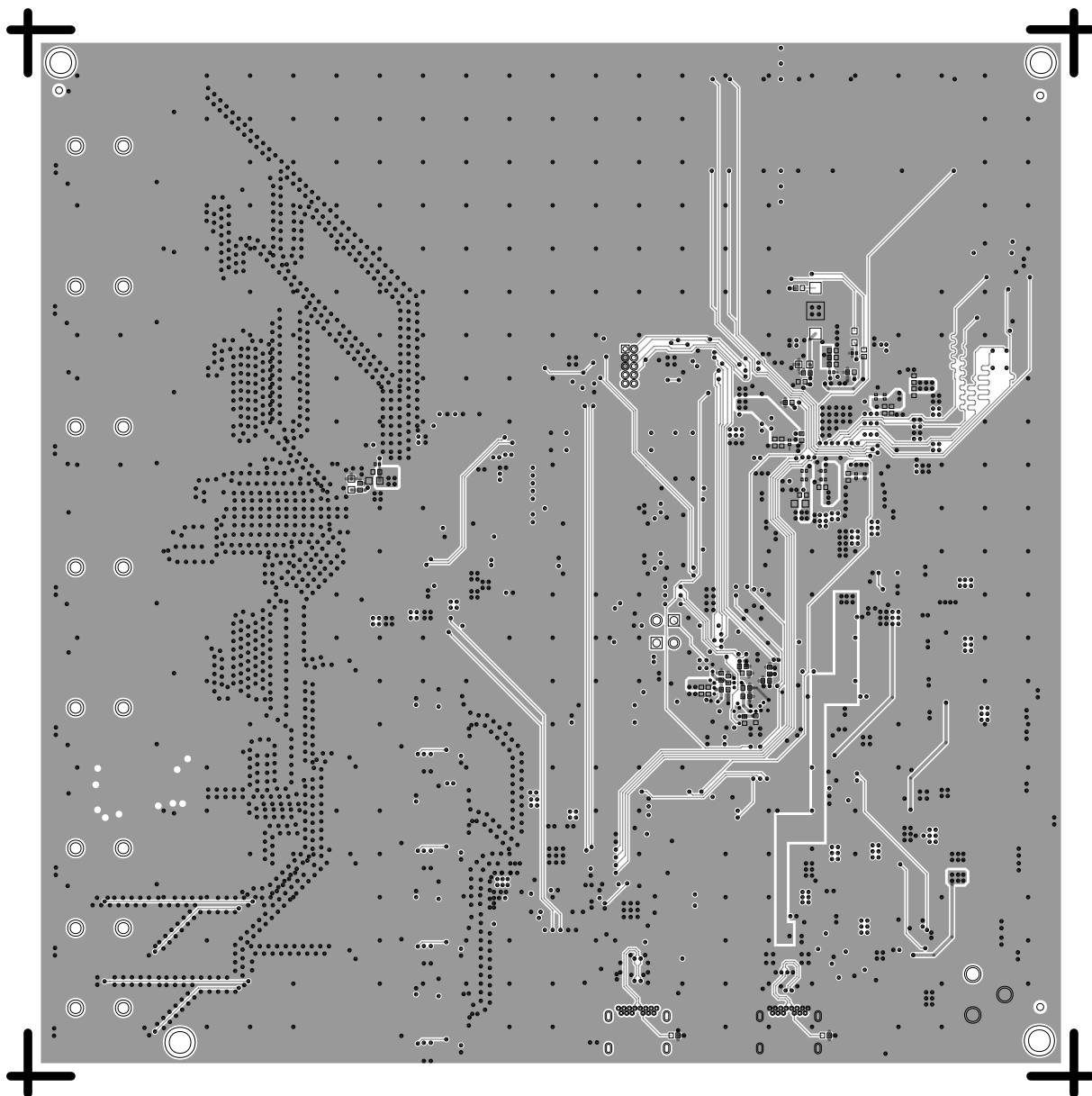
L4 PWR
08-067913-09
REV C



L5 GND
08-067913-10
REV C



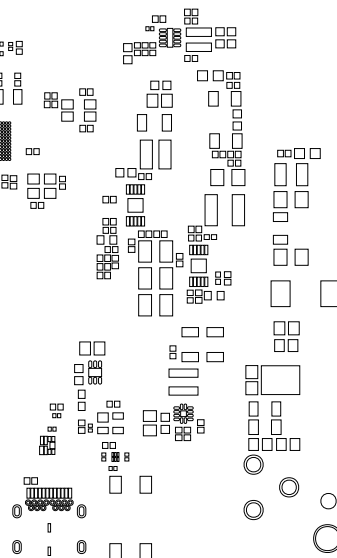
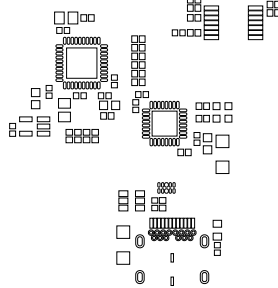
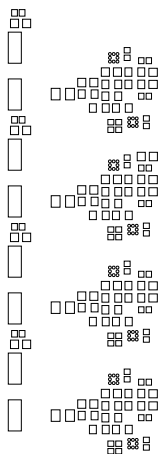
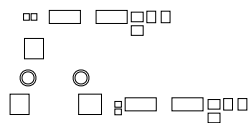
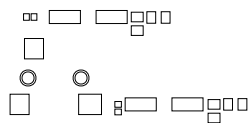
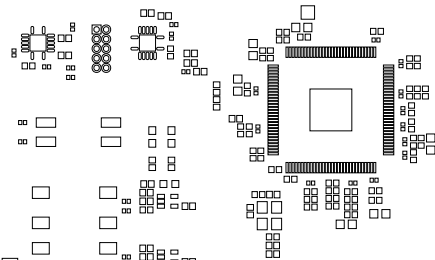
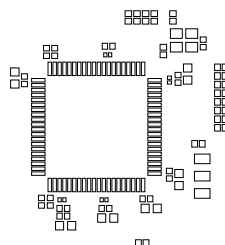
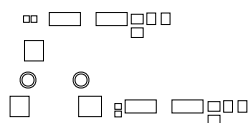
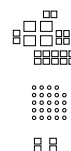
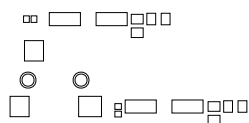
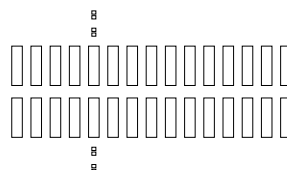
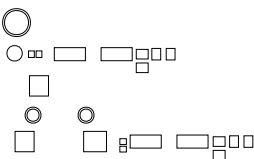
L6 SECONDARY
08-067913-02
REV C



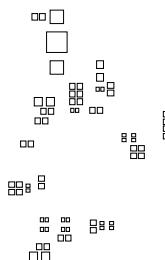
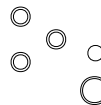
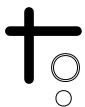
SOLDERMASK PRIMARY

08-067913-04

REV C



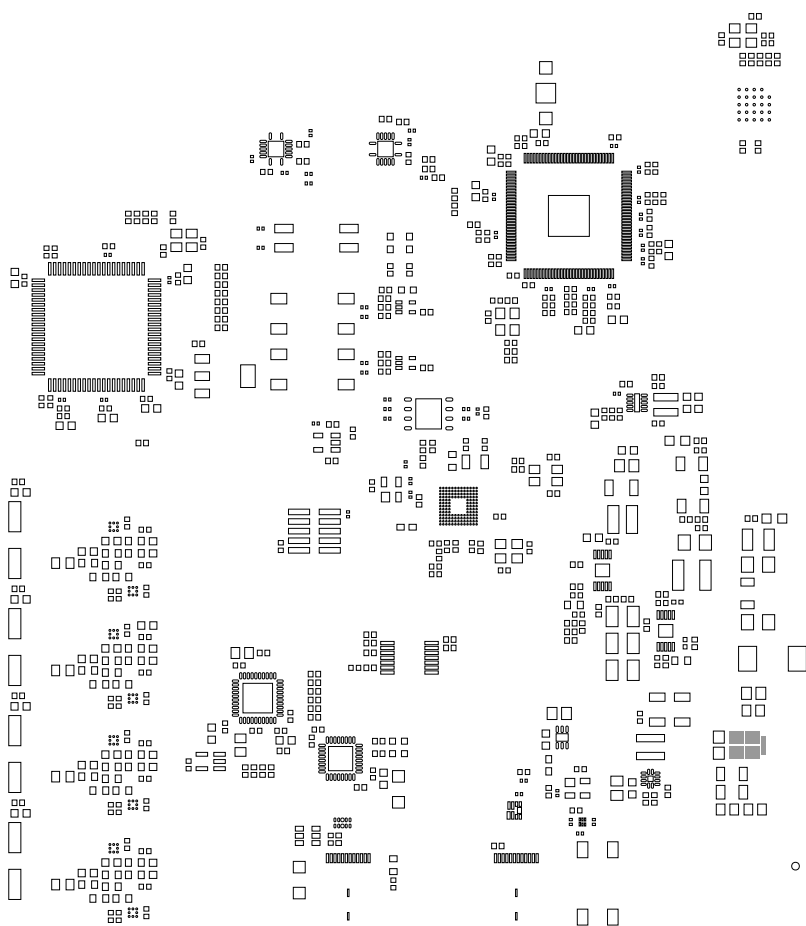
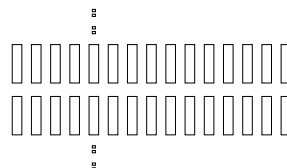
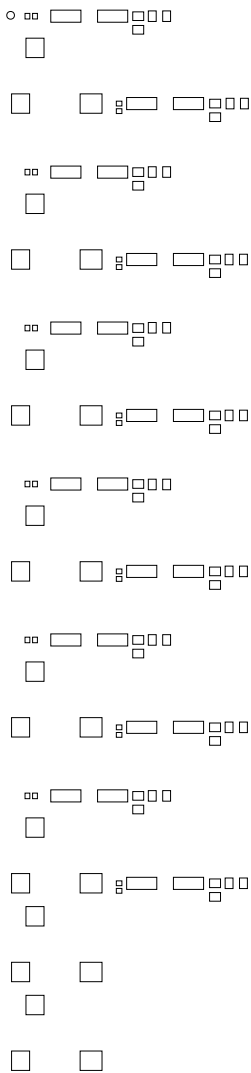
SOLDERMASK SECONDARY
08-067913-06
REV C



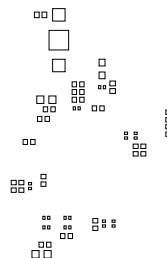
PASTEMASK PRIMARY

08-067913-11

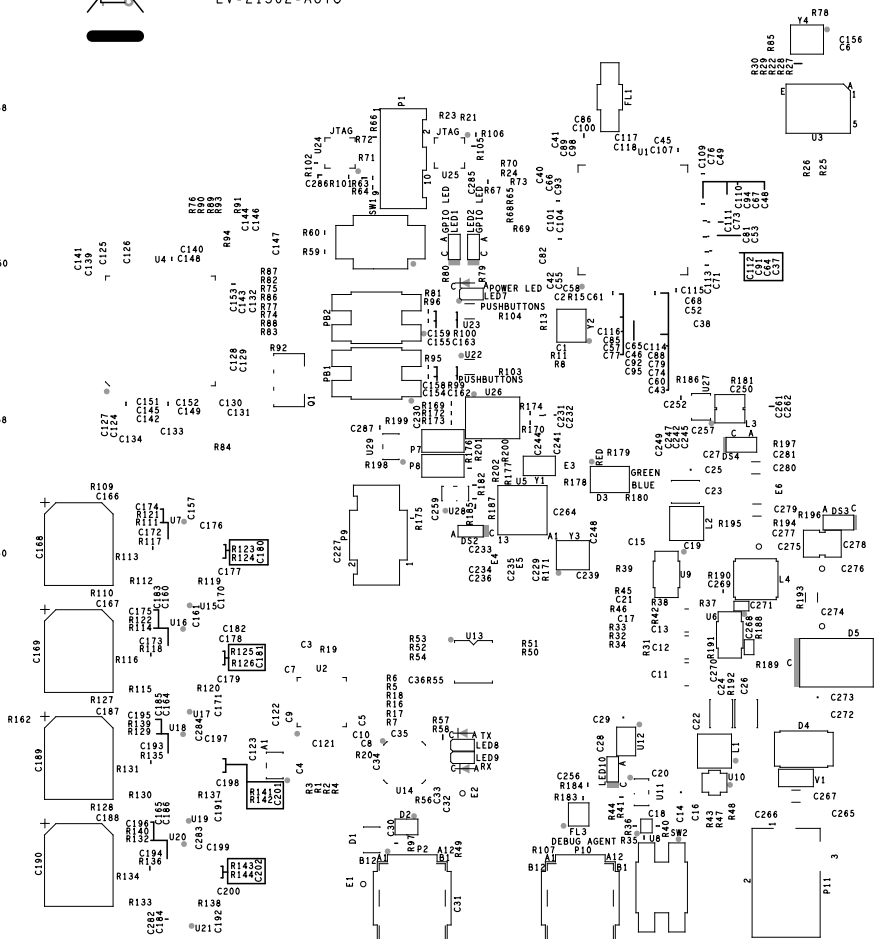
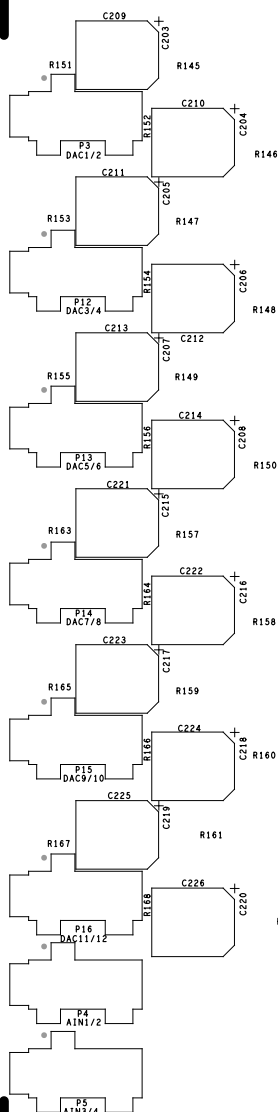
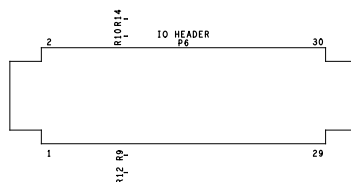
REV C



PASTEMASK SECONDARY
08-067913-12
REV C

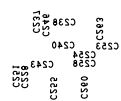


REV C



+

+



8019

809